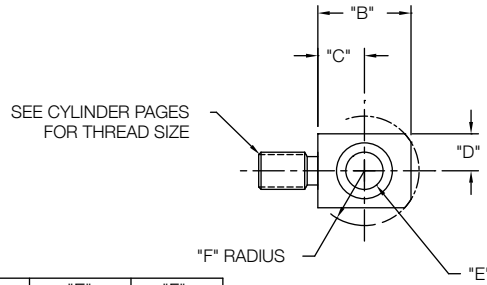
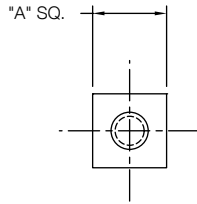


**Rod Eye
Option - "RE"**

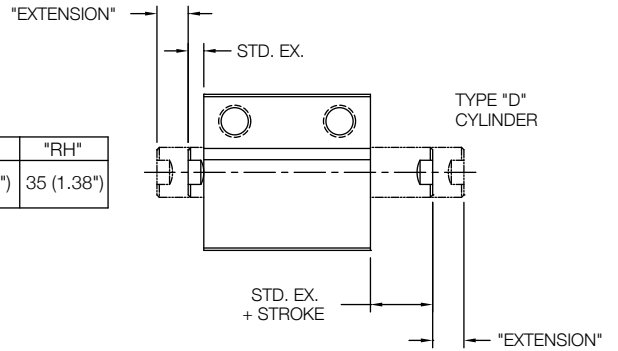


Bore	"A"	"B"	"C"	"D"	"E"	"F"
12	7,9(.31")	8,0(.32")	4,0(.16")	3,96(.156")	3,0(.119")	5,0(.20")
20	12,7 (.50")	12 (.47")	6 (.24")	6,35 (.25")	5 (.20")	8 (.32")
25		12,7(.50")	6,35(.25")		6,35(.25")	7,6(.30")
28,5	16 (.63")	20 (.79")	10 (.39")	8 (.32")	8 (.32")	12 (.47")
32		20 (.79")	10 (.39")	8 (.32")	8 (.32")	12 (.47")
40	19 (.75")	25 (.98")	12,5 (.49")	9,5 (.38")	10 (.39")	14 (.55")
50				12,7 (.50")		
63	25,4 (1.00")			12,7 (.50")		
76						

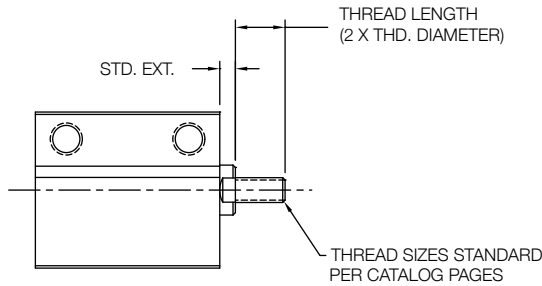
**Rod Extensions
Option - See Chart Below**

Extension	"RF"	"RT"	"RN"	"RY"	"RV"	"RH"
Length	5 (.20")	10 (.39")	15 (.59")	20 (.79")	25 (.98")	35 (1.38")

For standard extension, see catalog pages.
If cylinder is double ended, extension will be on both ends.
Consult factory for single ended extension on a double ended cylinder.



**Rod Stud
Option - "RS"**



Bore	Std. Ext.	Thread Length
12	3 (.12")	8 (.32")
20	3 (.12")	10 (.39")
25	5 (.20")	10 (.39")
28,5	3,2(.13")	16(.63")
32	5 (.20")	12 (.47")
40	5 (.20")	16 (.63")
50	5 (.20")	20 (.79")
63	5 (.20")	24 (.95")
76	5 (.20")	24 (.95")